



# Bulletin

The Newsletter of the West Toronto Stamp Club  
www.westtorontostampclub.org

The Club meets at  
**Fairfield Seniors' Centre**  
80 Lothian Ave., Etobicoke, ON  
416-394-8687

Volume 86  
Issue 447

Jan 2020

B. Timberg, Editor

## President Sid's Message

As I write this message for the coming new decade, I know you will be busy with family and festive activities but trust you will have found some time and solitude in your stamp room, to work on a project and / or plan for the 2020 philatelic year ahead.

Recently, during a quiet moment, I took time to read my copy of *Confederation – The Newsletter of the BNAPS Large and Small Queen Study Group*, Volume 68, November 2019. I thoroughly enjoyed the detailed postal history article *A Remarkable Correspondence of 1870's Life in York Factory*. The author wrote this article based on a correspondence lot, purchased at an excellent auction of BNA material held by the Canadian Philatelic Society of Great Britain (CPS of GB). This article underscored not only how philatelists rescue and document long forgotten stories of lives well lived, but also, again reminded me of the value to maintain my CPS of GB membership and to check out their next internet auction to be held in Q1 2020. A second, brief, well illustrated article entitled *Blob Under Ear of 1cent Small Queen* drove me to search through my accumulation of 1 cent small queens for this incredible large flaw. Without being a member of this BNAPS study group, I would never have known about this amazing possible variety nor have the pleasure of the hunt!

As you set philatelic goals for the coming year consider joining a specialist society or study group focused on the country or area you collect. As a Canadian collector you would do well to join CPS of GB or BNAPS and one of their many study groups. Reading a specialist society's publication not only provides many hours of pleasure but also becomes a most enjoyable way to expand your knowledge.

As I shared at the recent WTSC Christmas festivities, we continue to thrive because all of you as members make WTSC a terrific club to be part of. Thank you for your enthusiasm, friendship and welcoming interest in new members. Your willingness to share your philatelic knowledge and eager interest in what others collect are commendable. How you take joy in new purchases and finds / discoveries made by other members is also most noteworthy. Your active participation in our four monthly meetings as collectors, postal historians, exhibitors is encouraging and makes WTSC one of the best in the country.

As you enter dates in your 2020 calendars be sure to

note and plan to attend our Annual (this year expanded) Circuit Book Event on April 28.

Exhibiting and a final write up of collection / exhibiting pages often brings new learning and understanding. As you set goals for 2020, consider how you might participate in this year's WTSC Annual Exhibition to be held in May. Now, during these cold and dark winter months, is a good time to start pulling that potential exhibit together.

I look forward to your attendance and active participation at our January meetings. A reminder, the first meeting of the year will be a Learning Workshop Evening on Tuesday, January 7.

On behalf of the board, I wish you a year of happiness and good health and a year of maximum philatelic learning and pleasure.

## January Activities

Meetings are held on Tuesday evening, doors open at 6:30, and meetings start at 7:30, unless otherwise specified.

**Jan 7 ~ Learning Workshop** (starts 7 – 7:15)  
**American Philatelic Society – Scott Tiffney, Director of Information Services, and Gary Loew, Director of Expertizing, share details about the world's biggest philatelic organization**

**Jan 14 ~ Regular Meeting**  
Club circuit books, exchange of information, show and tell, and auction

**Jan 21 ~ Discussion Group** (starts at 7)  
Member **Klaus Hintz** will present on the **Postal History of Berlin**. It is a treat to have one of our club members present. All are encouraged to attend.

Because we have never scheduled a discussion group evening in December, we decided this year to try an 'experimental' Special Christmas Auction. The idea was to have members submit lots having higher than usual values, with each carrying a minimum opening bid of \$5. The experiment was successful; we offered 172 lots with more than 125 being sold after some spirited bidding. Total sales were over \$1650 (roughly double the amount at our regular auctions). This, obviously, is an experiment worth repeating in 2020.

**Jan 28 ~ Regular Meeting**  
Club circuit books, exchange of information, show and tell, and auction

# January Learning Workshop

Our fourth Learning Workshop of the 2019-20 season at 7 pm, Tuesday, January 7, is titled 'The American Philatelic Society — two staff directors share details about the world's biggest philatelic organization'.

Scott Tiffney, Director of Information Services, (below left) and Gary Loew, Director of Expertizing, (below right) will talk about services available to members and visitors to APS headquarters at Bellefonte, Pennsylvania.



*Scott Tiffney, APS IS Director (left) and Gary Loew, APS Expertizing Director (right)*

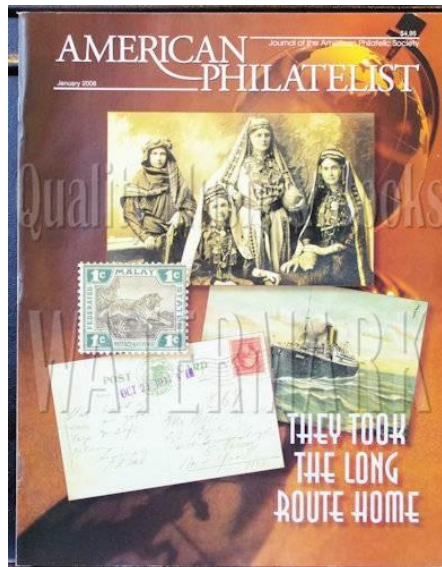
Both are meeting with the Greene Foundation Expert Committee on January 8 and accepted an invitation from Garfield Portch to visit our learning workshop.

Founded in 1886, the APS is the world's largest non-profit stamp collecting organization. Its stated mission is to promote the hobby to people of all ages, offering services that include knowledge and education, plus access to a vast American Philatelic Research Library (APRL), displays, and a contract post office with an interior on loan from the Smithsonian Institute in Washington.



*American Philatelic Society Research Library interior at Bellefonte, Pennsylvania*

The APS also publishes the 100-page monthly American Philatelist journal.



*Cover of American Philatelist, 100-page monthly magazine, January, 2008*

Last year (2019) a suggestion was made to organize a group excursion (West Toronto Stamp Club members) to Bellefonte. That's certainly something to consider further.

"In light of the interest in a trip to Bellefonte, I'm thinking that we will frame our comments around the concept of 'all the delights to be found at the American Philatelic Center'," Gary wrote in an e-mail to Garfield.

"Scott can speak about the wonders contained in the APRL's over four miles of bookshelves, as well as the many programs provided by this amazing resource."

"I'll be most happy to share the wonders to be found in a 1,400 volume philatelic Reference Collection of genuine and forged postal artifacts, as well as the joys of managing an Expert Committee of nearly 180 specialized experts. And between Scott and I, we can chat about the many other enticements located at the APC."



*American Philatelic Center in former match factory, Bellefonte, Pennsylvania*



Entrance to American Philatelic Center, Bellefonte, Pennsylvania

With all this in mind, come one and all to the round table at the library of the Fairfield Seniors' Centre, 80 Lothian Avenue, Etobicoke.

Hope you'll enjoy what Scott and Gary have to share with us.

Ian Robertson, WTSC vice-president (APS member since 1975)



## Giving Tuesday / APS

Giving Tuesday, the Tuesday after the U.S. Thanksgiving holiday, is a day of charitable giving. This year APS sought to raise \$5000 for its StampsTeach program in schools. According to its Facebook page of December 4:

"In just 24 hours, we exceeded our Giving Tuesday goal of \$5000, for a total (online and matching) of \$7040. Again, thank you to the champions of StampsTeach for your support, for sharing our goal with friends and family, and for sharing your love of stamps and philately with students across the U.S. Next step: In January, the Education department will

start sending out StampsTeach packages to the schools you designated!"

For details, see:

<https://stamps.org/home/post/countdown-to-giving-tuesday-2019-matching-donors>

## Expertising at the APS

One of the speakers at this month's learning workshop is Gary Loew, APS Expertizing Director. Two items recently posted by APS on social media highlight their expertizing services. In the first, the service helped a collector find considerable value in his collection.

<https://www.facebook.com/watch/?v=577788756339388>

In the second, APS experts certified a rare, historic first day cover and related stamps. As stated in the posting:

"The service recently received a piece of parcel wrapping paper containing a US Scott No. Q5, the first 5¢ Parcel Post stamp.

It appeared to be used on the first day of Parcel Post service on January 1, 1913. The parcel wrapper also included a 1¢ Parcel Post Postage Due stamp.

Scott had previously assigned a catalog value of \$3,500 to a No. Q5 as a First Day Cover (FDC). But the Scott listing for the JQ1 postage due only lists an Earliest Document Use (EDU) of February 26, 1913.

The APEX Expert Committee examined this cover and determined that both stamps originated on this cover and were properly cancelled. The contemporaneous docketing establishes the date of use. As a result, this cover is a FDC for both stamps and a new EDU for the Parcel Post Postage Due stamp."

<https://stamps.org/blog/post/aps-experts-certify-rare-historic-first-day-cover-and-related-stamps/fbclid/iwar3z2z3qsxhjaoroivtitzhkc-diyzyxeefzqqdzmik2jsuvxjbc0zyokg>

## Postal Stories in the News

A few days before Christmas the BBC posted a story about a card mailed in Wales and intended for delivery within the UK. Instead, the card ended up 5200 miles away in California. To find out what happened, see:

<https://www.bbc.com/news/uk-wales-50874350>

In another posting from the BBC, the broadcaster tells the story about Campobello, a small island on the southwestern tip of New Brunswick and only accessible year-round by bridge from Maine. According to the posting, U.S. Customs agents have recently begun intercepting Canadian mail sent to the island via Maine. Some packages, legal in Canada, have been seized by U.S. agents. Residents are said to be frustrated and concerned about their privacy.

<https://www.bbc.com/news/world-us-canada-49901455>

## CAPEX '22

In 2022 Canada will host an international exhibition after a 26 year absence, with CAPEX '22. Although the final dates and venue are still being finalized it will be a 4 day show at a hotel or convention centre complex in Toronto.

CAPEX '22 will include 400 frames of exhibits plus print and electronic literature classes. All frame exhibits will be in the One Frame class and may be from any parent FIP class including the experimental picture post card class.

The exhibition is being organized by the Canadian Association of Philatelic Exhibitions – Association Canadienne des Expositions Philatélique [formerly the Toronto Association of Philatelic Exhibitions or TAPE – Ed.]. The Royal Philatelic Society of Canada (RPSC) will host the exhibition and all RPSC chapters and affiliates will be invited to participate in the exhibition with numerous seminars and specialist presentations.

CAPEX '22 received the FIAF Patronage of the Federación Inter-Americana de Filatelia and is finalizing the FIP Recognition with the Fédération Internationale de Philatélie.

CAPEX '22 hopes to showcase a broad range of Canadian one frame exhibits and philatelic literature. The qualification for entry of one frame is a vermeil medal at a national level show. As CAPEX '22 is still 30 months away, exhibitors have both 2020 and 2021 to qualify. Exhibits can qualify at either a Canadian or USA WSP shows.

David McLaughlin



*David is a director of CAPE, BNAPS and the RPSC. He is an award-winning international exhibitor. David presented at our discussion group meeting in November 2018 on his exhibit 1897-1898 Maple Leaf Issue of Canada. Ed.*

## WTSC Board of Directors

President: Sid Mensinga  
Vice-President: Ian Robertson  
Past President: Frank Alusio  
Secretary: Rhonda Kavanagh  
Treasurer: Lawrence Pinkney  
Membership: Patricia Blanchard

Directors: Simon Cloughton, Fred Colbourn, Jose Restrepo, Rob Taylor, Bob Timberg

## Philatelic Research at the British Library

We are indebted to Brian Livingstone FRPSL, Secretary of the King George VI Collector's Society, for bringing to our attention a new publication, *A Guide to Philatelic Research at the British Library*. Most of us will never have the opportunity to conduct research at the British Library, however one day someone might.

The following description of the text is taken from the selling agent's web site.

### **Beech, David R. - A Guide to Philatelic Research at The British Library**

Publisher: privately published by the author, London, 2019.

First edition, large format (A4) paperback, 50 pages.

This new monograph seeks to provide information to the philatelic research community, and other specialist users of the British Library's Philatelic Collections, which may otherwise only be available from diverse sources. The guide lists and describes the 78 philatelic collections held by the British Library, provides a subject index to their contents and gives details about their availability for research. The contents include: A Brief History of the British Library, A Brief History of the Philatelic Collections, List of the Philatelic Collections, Subject Index of the Philatelic Collections, Arranging to see the Philatelic Collections, the Philatelic Exhibition, Philatelic Literature, the Crawford Library, Stamp Albums, Other Collections of interest for philatelic research (which include Directories and Timetables, India Office Records, Maps, Manuscripts, Newspapers, Official Publications and Patents), a Select Bibliography and a General Index. As an appendix the Guide includes a new and revised third edition of the article by David Beech "Philatelic Research - A Basic Guide" which was first published in 2008.

£9.95

[www.hhsales.co.uk](http://www.hhsales.co.uk)

## Smithsonian National Postal Museum

One of the great benefits of the Internet is the ability to instantaneously discover what is happening elsewhere in the philatelic community. A great source of information, and reading pleasure, are the web site and Facebook page of the National Postal Museum in Washington, DC. Being a baseball fan, I have made a mental note to make every effort to visit the Museum to view their upcoming exhibition, *Baseball: America's Home Run*, which runs from June 27, 2020 to March 1, 2022. Ed.

<https://postalmuseum.si.edu/upcoming-exhibitions>

# Year-end Letter from the Greene

The following letter was issued on December 18, 2019 and is reproduced here for the information of members.

I am taking this opportunity to let all of you know and understand the numerous changes that have occurred this year within the Greene Foundation. Every now and then a number of events happen in a relatively short period and appear to be revolutionary rather than evolutionary.

Late last year we were advised by Margaret Schulzke that she planned to retire following 19 years of dedicated service to the Foundation. A committee to find a successor was assembled that, after reviewing and interviewing more than 25 potential candidates, was fortunate to secure the services of Lee Ann Stewart as our new Executive Assistant. Lee Ann has brought a whole new range of talents that result in getting the same jobs done, but in a different way. Margaret retired at the end of June with recognition, thanks for a job well done and best wishes for a life of leisure. We are pleased to report that Margaret has since returned to work one day per week for the Expert Committee.

In September our esteemed Chairman of the Board and President of the Foundation, Ted Nixon, announced that he wished to retire from that position after serving 13 years. Ted inherited the job when Harry Sutherland died in February 2006. Under his leadership we have seen the Greene Foundation evolve into a vibrant servant of the philatelic community, we have seen the entry into the world of forensic and analytic philately and we have seen the library evolve from a 'reading room' into a world class research library. To list his accomplishments is beyond the scope of this report.

A management committee was struck to consider future governance of a growing Foundation and to consider a successor to Ted. On October 30, at a meeting of the full Board of Directors, it was agreed that the new President / Chairman would be one of three persons serving on a management committee. That Committee, now in place, consists of myself as President and Board Chairman, Charles Verge as Vice President, and Ingo Nessel as Secretary-Treasurer.

At the same meeting, Ted's retirement was accepted by the Board and he was thanked and suitably recognized for his service. Ted was also given a new title, Chairman Emeritus, which serves to retain his services on the Board. Ted also accepted his dream job as Chairman of the Expert Committee (which I truly believe is the only job he ever wanted).

Late yesterday a *Friends of the Library* newsletter was sent by Kathy Hartley advising that she is leaving the Greene Foundation and taking a sabbatical from philately in order to pursue other challenges. I want to take this opportunity to thank Kathy for her

contributions to the Harry Sutherland Philatelic Library. For an individual who came to the Greene as a Librarian, not a philatelist, her contributions have been remarkable and evidence of her presence will be seen for years to come.

Kathy chose to exit without fanfare or recognition but we would be remiss if we didn't say 'Thank You' and 'Best Wishes in whatever you do next'.

The New Year Levee will not be held this year but the Library will continue to support Saturday openings and all other services initiated by Kathy, which will be advertised on the website.

Best wishes to all for the Holiday Season and for a Happy New Year.

Garfield Portch  
President and Chairman of the Board  
Vincent Graves Greene Philatelic Research Foundation

## A Quote to Remember from the National Postal Museum

"A stamp is much more than the physical evidence that postage has been paid. Stamps can be miniature works of art, treasured keepsakes, and rare collectibles."

## Her Majesty the Queen Opens New RPSL Headquarters

On Tuesday, November 26, 2019, Her Majesty the Queen officially opened the new RPSL headquarters at 15 Abchurch Lane, London. The photo below, one of many taken at the event, is from the Facebook page of The Royal Family. Richard Stock, RPSL President, is to the Queen's immediate left.

The RPSL press release, *The Queen opens new RPSL headquarters*, may be viewed at:

[https://www.rpsl.org.uk/rpsl/PressReleases/RPSL-Press-Release\\_20191128.pdf?fbclid=IwAR0Pu44Twed\\_3bmpGBm6FV10p6w15I3T-5VInpPoEq5BTswqp41Py7z3sZ8](https://www.rpsl.org.uk/rpsl/PressReleases/RPSL-Press-Release_20191128.pdf?fbclid=IwAR0Pu44Twed_3bmpGBm6FV10p6w15I3T-5VInpPoEq5BTswqp41Py7z3sZ8)



